



## RayBiotech, Inc.

3607 Parkway Lane suite 200  
Norcross, GA 30092  
Tel: 770-729-2992, 1-888-494-8555  
Fax: 770-206-2393  
Website: [www.raybiotech.com](http://www.raybiotech.com)  
Email: [info@raybiotech.com](mailto:info@raybiotech.com)

### Certificate of Analysis and Data Sheet

## Mouse Anti-Human SCML2 With HRP-conjugated secondary anti-mouse

**Catalog No.**

JI-04-00230

**Species:**

Human

**Isotype:**

Mouse IgG1

**Accession No.**

NM\_006089

### Full name/Synonyms:

Homo sapiens sex comb on midleg-like 2 (Drosophila) (SCML2), mRNA

### Preparation

Immunogen was recombinant protein derived from human SCML2. This antibody was produced from a hybridoma resulting from the fusion of a mouse myeloma with B cells obtained from a mouse immunized with the immunogen. The IgG fraction of tissue culture supernatant was purified by Protein G affinity chromatography.

### Applications

Table Summary of antibody applications and working conditions

Options Functions	YES	NO	Not determined	Work dilution or positive sample
ELISA	•			
Western Blotting(WB)	•			HeLa whole cell lysate NIH3T3 whole cell lysate F2408 whole cell lysate
Immunohistochemistry(IHC)			•	
Immunocytochemistry (ICC)			•	
Immunoprecipitation(IP)			•	
Flow Cytometry(FACS)			•	
Immunofluorescence staining(IF)			•	
Neutralization			•	

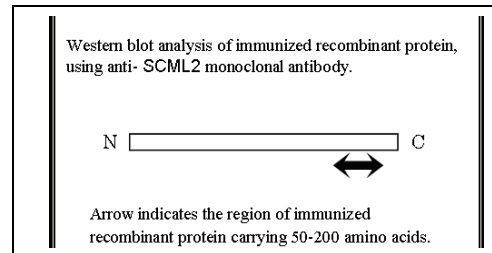
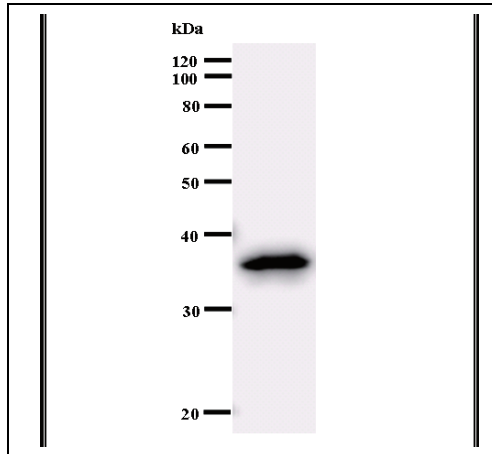
Note: Other applications are not tested yet. Optimal dilutions should be determined by each laboratory for each application.

**The products are furnished for LABORATORY RESEARCH USE ONLY.  
Not for diagnostic or therapeutic use.**



## RayBiotech, Inc.

3607 Parkway Lane suite 200  
 Norcross, GA 30092  
 Tel: 770-729-2992, 1-888-494-8555  
 Fax: 770-206-2393  
 Website: [www.raybiotech.com](http://www.raybiotech.com)  
 Email: [info@raybiotech.com](mailto:info@raybiotech.com)



### Secondary Antibody Applications

Options / Functions	YES	NO	Not determined	Recommended Work dilution or concentration
Immunoassay (ELISA, Western blot)	•			1:5000-1:10000

### Reconstitution

Supplied as 100 µg of purified antibody. It is reconstituted with 1ml of sterile PBS containing 1% BSA and 0.05% sodium azide. Its final concentration is 100µg/ml. **Please avoid freeze-thaw cycles.**

### Storage

Store at -20<sup>0</sup>C, if not intended for use within a month. Keep it at 4<sup>0</sup>C and minimize freezing and thawing when use. **Please avoid freeze-thaw cycles.**

**The products are furnished for LABORATORY RESEARCH USE ONLY.  
 Not for diagnostic or therapeutic use.**