



RayBiotech, Inc.

3607 Parkway Lane suite 200
Norcross, GA 30092
Tel: 770-729-2992, 1-888-494-8555
Fax: 770-206-2393
Website: www.raybiotech.com
Email: info@raybiotech.com

Certificate of Analysis and Data Sheet

Mouse Anti-Human ABCF2 With HRP-conjugated secondary anti-mouse

Catalog No.

JI-04-00412

Species:

Human

Isotype:

Mouse IgG1

Accession No.

NM_005692

Full name/Synonyms:

Homo sapiens ATP-binding cassette, sub-family F (GCN20), member 2 (ABCF2), nuclear gene encoding

Preparation

Immunogen was recombinant protein derived from human ABCF2. This antibody was produced from a hybridoma resulting from the fusion of a mouse myeloma with B cells obtained from a mouse immunized with the immunogen. The IgG fraction of tissue culture supernatant was purified by Protein G affinity chromatography.

Applications

Table Summary of antibody applications and working conditions

| Options Functions | YES | NO | Not determined | Work dilution or positive sample |
|---------------------------------|-----|----|----------------|----------------------------------|
| ELISA | • | | | |
| Western Blotting(WB) | • | | | |
| Immunohistochemistry(IHC) | | | • | |
| Immunocytochemistry (ICC) | | | • | |
| Immunoprecipitation(IP) | | | • | |
| Flow Cytometry(FACS) | | | • | |
| Immunofluorescence staining(IF) | | | • | |
| Neutralization | | | • | |

Note: Other applications are not tested yet. Optimal dilutions should be determined by each laboratory for each application.

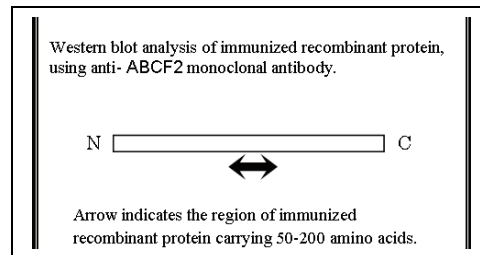
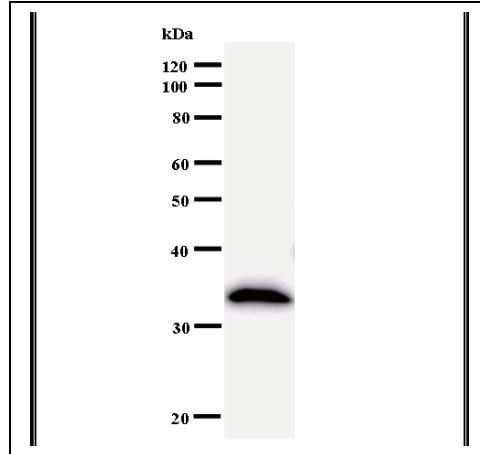
The products are furnished for LABORATORY RESEARCH USE ONLY.

Not for diagnostic or therapeutic use.



RayBiotech, Inc.

3607 Parkway Lane suite 200
Norcross, GA 30092
Tel: 770-729-2992, 1-888-494-8555
Fax: 770-206-2393
Website: www.raybiotech.com
Email: info@raybiotech.com



Secondary Antibody Applications

| Options / Functions | YES | NO | Not determined | Recommended Work dilution or concentration |
|-----------------------------------|-----|----|----------------|--|
| Immunoassay (ELISA, Western blot) | • | | | 1:5000-1:10000 |

Reconstitution

Supplied as 100 µg of purified antibody. It is reconstituted with 1ml of sterile PBS containing 1% BSA and 0.05% sodium azide. Its final concentration is 100µg/ml. **Please avoid freeze-thaw cycles.**

Storage

Store at -20°C, if not intended for use within a month. Keep it at 4°C and minimize freezing and thawing when use. **Please avoid freeze-thaw cycles.**

**The products are furnished for LABORATORY RESEARCH USE ONLY.
Not for diagnostic or therapeutic use.**