

Auto Western Service

Western blotting just got easier.



- Antibodies Included: Choose from any of our pre-validated in stock antibodies
- No need to purchase and test your own Ab. Price includes any antibody from our pre-validated in-stock list, or you can send us your own antibody.
- Low sample volume required (5 μ l)
- As low as 0.2 μ g/ μ l protein required
- Get ng to pg sensitivity
- High-throughput automated processing of 96 samples simultaneously



What could you accomplish if you didn't have to run westerns anymore?

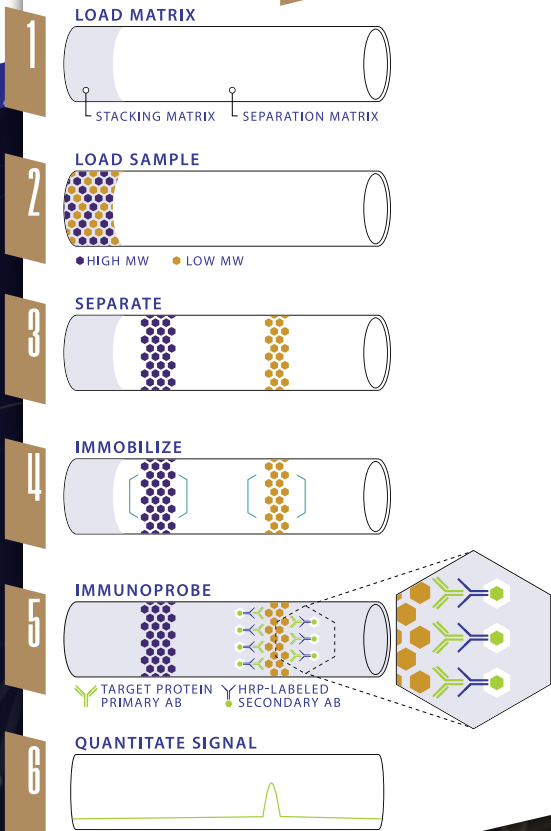
Learn more & browse antibodies



Auto Western Service

Western blotting just got easier.

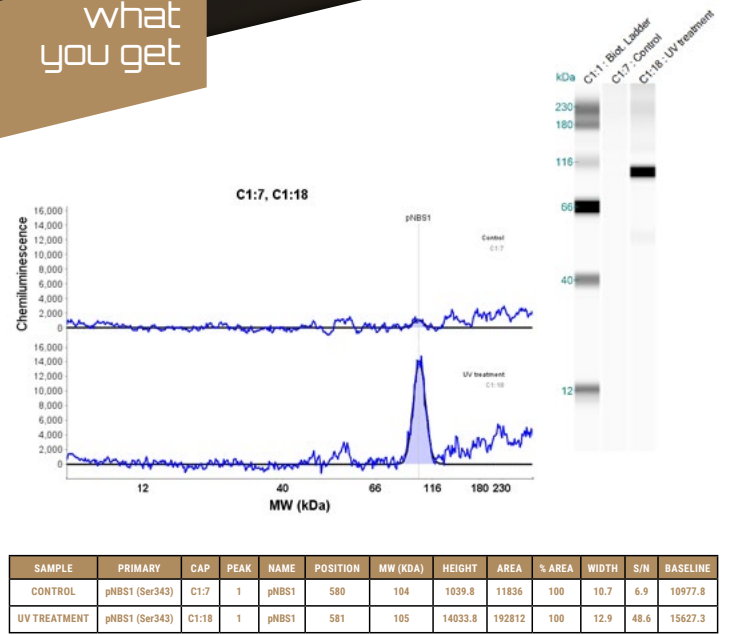
how it works



- Electropherogram trace
- Quantitative analysis for each signal band
- Virtual "blot" image
- Signal optimization
- Submission to results in 1-2 weeks

RayBiotech's western blot service uses a highly accurate and precise capillary immunoassay method. As little as 40 nL of sample is loaded into the automated capillary system. Once separate, the proteins are immobilized to the capillary walls. Target proteins are identified using a primary antibody and immunoprobed using an HRP-conjugated secondary antibody and chemiluminescent substrate. The resulting chemiluminescent signal is detected and quantitated.

what you get



SAMPLE	PRIMARY	CAP	PEAK	NAME	POSITION	MW (KDA)	HEIGHT	AREA	% AREA	WIDTH	S/N	BASILINE
CONTROL	pNBS1 (Ser343)	C1:7	1	pNBS1	580	104	1039.8	11836	100	10.7	6.9	10977.8
UV TREATMENT	pNBS1 (Ser343)	C1:18	1	pNBS1	581	105	14033.8	192812	100	12.9	48.6	15627.3